



Household & Public Health

Department of Entomology

CLOVER MITES IN THE HOME

Gary W. Bennett and Timothy J. Gibb, Extension Entomologists

The clover mite can become an annoying household pest, especially in and around homes where new lawns are being established or where there's a heavy growth of well-fertilized grass close to foundation walls.

The mites are very tiny creatures (smaller than a pin head) and may occur in countless numbers. They usually appear first around windows, but later may overrun the entire home. They do not bite people or cause any damage indoors, but are extremely annoying and will leave a red stain when crushed.

Clover mites feed on grasses, clovers and certain other plants in the lawn and around the home. They often crawl into cracks and crevices to molt and lay eggs. Typical "hiding places" are under the loose bark of trees, on foundations walls, beneath siding and around window frames.

Clover mites are most abundant in the fall and spring and are relatively inactive during the hot summer months and again during cold weather. They will migrate into homes either when population pressure becomes too great or when feeding conditions become unfavorable, such as the onset of hot or cold weather.

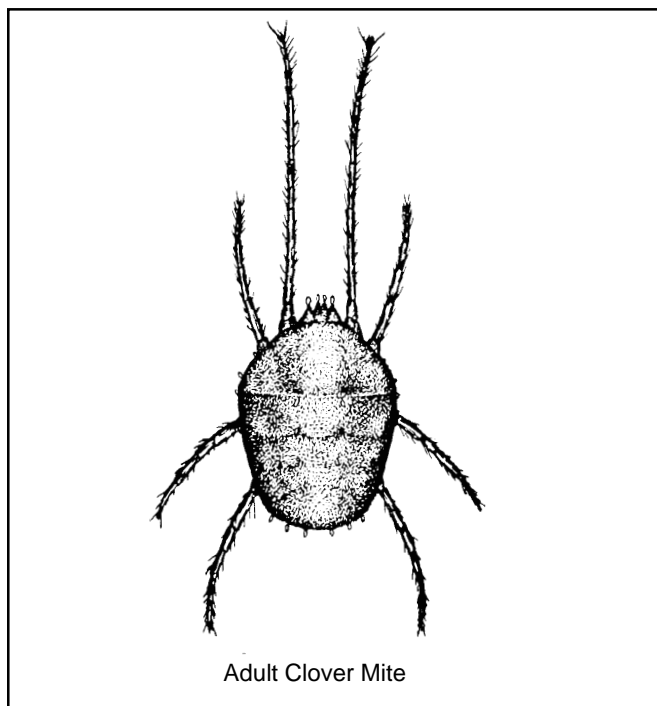
CONTROL MEASURES

Once inside a home, clover mites are difficult to control. Although those present can be killed with certain sprays, more are likely to show up. Thus, prevention is better than cure—that is, keeping the mites from ever entering the home. Following are preventive and control measures that have proven to be effective.

1. Grass and shrubbery growing against foundation walls make it easy for mites to get from lawn to house. To prevent easy access, lay a barrier of pea gravel 18-24 inches wide along the foundation walls. If pea gravel is not practical, leave bare soil or use flower beds as the barrier.

2. Spray both barrier strip and foundation walls with a miticide. Where possible, also treat the inside of the foundation walls, including the plates and areas above them. If there is no barrier strip, treat foundation walls and the grass itself for a distance of 10-20 feet outward from the walls.

Some of the miticides effective and safe for use under conditions described above are Diazinon and Malathion (Malathion may have a shorter residual action and can be ineffective when weather is cool). It should be noted that diazinon registration will be cancelled in 2003. The proper spray concentration will depend on whether or not flowers and shrubs are in the area to be treated. Follow label directions closely.



Adult Clover Mite

3. At first sign of mite invasion, paint or spray window channels and outside frames with a labelled formulation of one of the miticides. Also, treat any other obvious entrance points. Repeat as necessary.

4. Mites indoors can be killed with a spray containing synergized pyrethrins, but direct contact is necessary and permanent protection cannot be assured.

5. In situations where mites are especially difficult to control, consider the services of a commercial pest control specialist.

SCIENTIFIC NAME

Clover mite—*Bryobia praetiosa* Koch

READ AND FOLLOW ALL LABEL INSTRUCTIONS. THIS INCLUDES DIRECTIONS FOR USE, PRECAUTIONARY STATEMENTS (HAZARDS TO HUMANS, DOMESTIC ANIMALS, AND ENDANGERED SPECIES), ENVIRONMENTAL HAZARDS, RATES OF APPLICATION, NUMBER OF APPLICATIONS, REENTRY INTERVALS, HARVEST RESTRICTIONS, STORAGE AND DISPOSAL, AND ANY SPECIFIC WARNINGS AND/OR PRECAUTIONS FOR SAFE HANDLING OF THE PESTICIDE.

Revised 5/2001

It is the policy of the Purdue University Cooperative Extension Service, David C. Petritz, Director, that all persons shall have equal opportunity and access to the programs and facilities without regard to race, color, sex, religion, national origin, age, marital status, parental status, sexual orientation, or disability. Purdue University is an Affirmative Action employer.

1-888-EXT-INFO (398-4636)

<http://www.agcom.purdue.edu/AgCom/Pubs/menu.htm>